

EXHIBIT 3

OVERALL MARKET STREET CORRIDOR PLANTING SCHEDULE

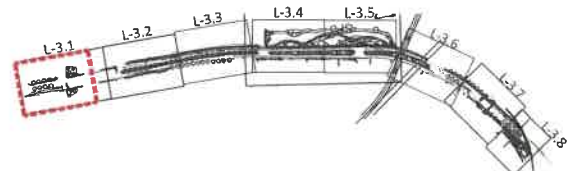
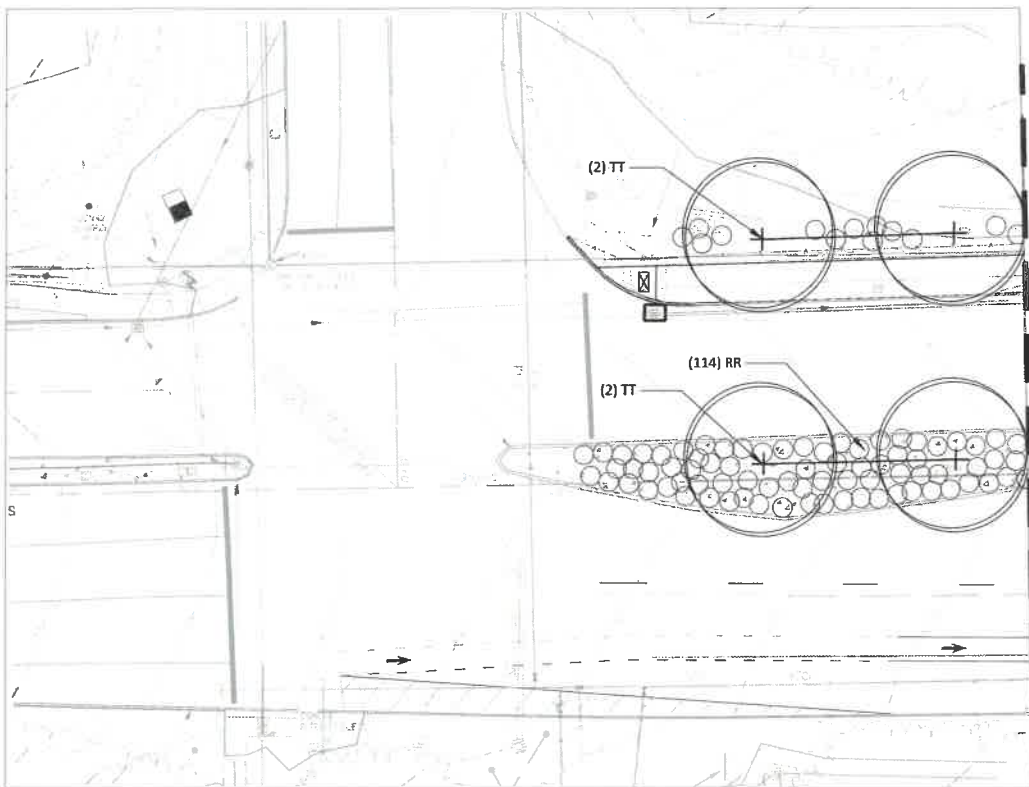
TYPE	QUANTITY	KEY	BOTANICAL NAME	COMMON NAME	SIZE	ROOT
Meadow Mix						
	50,000 SF		"New England Coastal Salt-Tolerant Grass Mix" by New England Wetland Plants, Inc. (Or approved alternative)			
Groundcover						
	278	RA	Rhus aromatica 'Grow low'	Grow-low Fragrant Sumac	#3	CONT
Shrubs						
<i>Parks & Biomedian Shrubs</i>						
	51	AM	Aronia melanocarpa	Black Chokeberry	#3	CONT
	48	CA	Clethra alnifolia	Summersweet	#3	CONT
	113	FG	Fothergilla gardenii	Dwarf Fothergilla	#3	CONT
	35	FM-MA	Fothergilla major 'Mt. Airy'	Mount Airy Fothergilla	#3	CONT
	15	FM	Fothergilla major	Large Fothergilla	#5	CONT
	201	IG	Ilex glabra	Inkberry Holly	#3	CONT
	178	IV-F	Ilex verticillata 'Winter Red'	Winterberry	#3	CONT
	10	IV-M	Ilex verticillata 'Jim Dandy'	Winterberry	#3	CONT
	256	J	Juniperus virginiana 'Grey Owl'	Juniper	#3	CONT
	276	MP	Myrica pennsylvanica	Bayberry	#5	CONT
	265	RR	Rosa rugosa 'Alba'	Beach Rose	#3	CONT
	91	VC	Vaccinium corymbosum	Highbush Blueberry	#3	CONT
	38	VD	Viburnum dentatum	Arrowwood viburnum	#5	CONT
<i>Street Tree Underplanting</i>						
	636	IG-C	Ilex glabra 'Compacta'	Inkberry Holly	#3	CONT
	693	J	Juniperus virginiana 'Grey Owl'	Juniper	#3	CONT
	603	RR	Rosa rugosa 'Alba'	Beach Rose	#3	CONT
Trees						
<i>Street Trees</i>						
	14	AR	Acer rubrum 'October Glory'	Red Maple	4" cal.	B&B
	15	QR	Quercus borealis 'Rubra'	Red Oak	4" cal.	B&B
	12	SJ	Sophora japonica 'Regent'	Japanese Pagodatree	4" cal.	B&B
	35	TT	Tilia tomentosa 'Sterling Silver'	Silver Linden	4" cal.	B&B
	13	UP	Ulmus parvifolia 'Allee'	Chinese Elm	4" cal.	B&B
<i>Park & Biomedian Trees</i>						
	24	AC-S	Amelanchier canadensis	Shadblow - Small	5-6' clump	B&B
	24	AC-M	Amelanchier canadensis	Shadblow - Medium	8-10' clump	B&B
	3	AR-S	Acer rubrum	Red Maple - Small	2" cal.	B&B
	4	AR-M	Acer rubrum	Red Maple - Medium	3" cal.	B&B
	30	BN-S	Betula nigra	River Birch - Small	6-8' 50% mix single / clump	B&B
	21	BN-M	Betula nigra	River Birch - Medium	8-10' 50% mix single / clump	B&B
	6	JV-S	Juniperus virginiana	Red Cedar - Small	6-7'	B&B
	12	JV-M	Juniperus virginiana	Red Cedar - Medium	7-8'	B&B
	14	NS-S	Nyssa sylvatica	Black Tupelo - Small	2" cal.	B&B
	7	NS-M	Nyssa sylvatica	Black Tupelo - Medium	3" cal.	B&B
Perennials & Grasses						
	87	C-AC	Calamagrostis x acutiflora 'Karl Foerster'	Feather Reed Grass	#2	CONT
	74	EF	Eupatorium fistulosum	Joe Pye Weed	#2	CONT
	156	EP	Echinacea purpurea 'White Swan'	Echinacea	#2	CONT
	191	LS	Liatris scariosa	Tall Gayfeather	#2	CONT
	407	SH	Sporobolus heterolepis	Prairie Dropseed	#2	CONT
	162	SNA	Symphotrichum novae-angliae	New England Aster	#2	CONT
	421	SS	Schizachyrium scoparium	Little Bluestem	#2	CONT

OVERALL MARKET STREET CORRIDOR PLANTING SCHEDULE

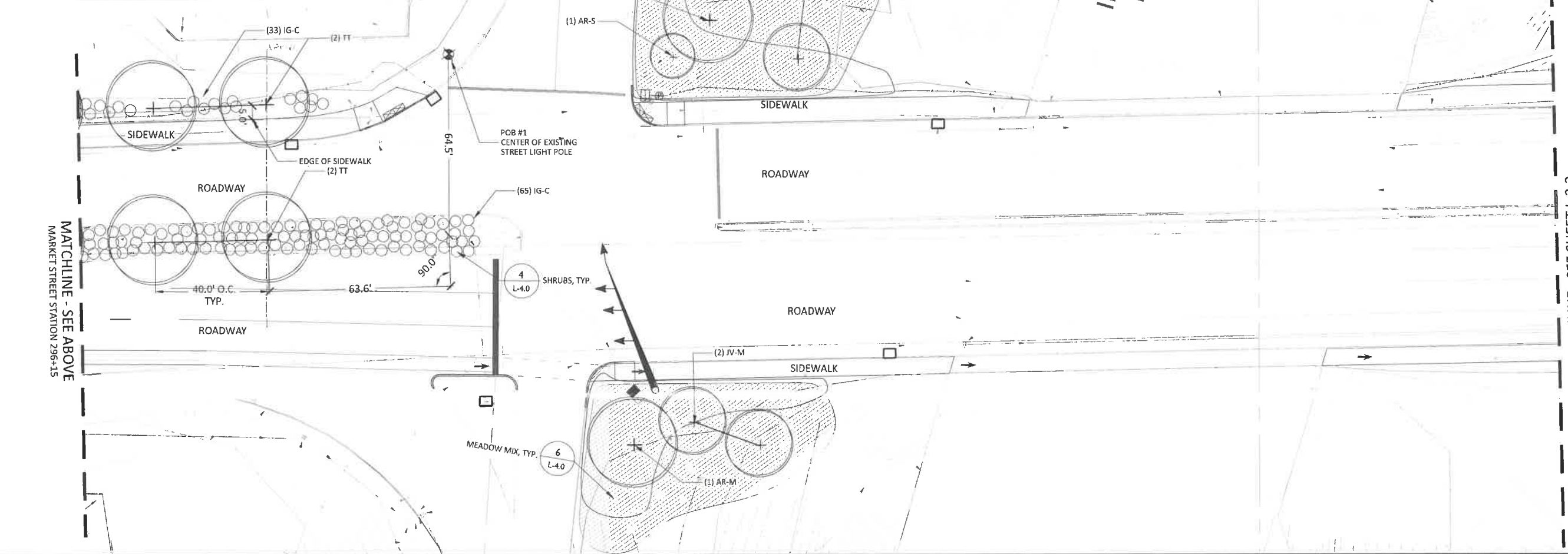
TYPE	QUANTITY	KEY	BOTANICAL NAME	COMMON NAME	SIZE	ROOT
Meadow Mix	50,000 SF		"New England Coastal Salt-Tolerant Grass Mix" by New England Wetland Plants, Inc. (Or approved alternative)			
Groundcover	278	BA	Rhus aromatica 'Grow low'	Grow-low Fragrant Sumac	#3	CONT
Shrub:						
Park & Biomedial Shrub:						
51	AM	Aronia melanocarpa	Black Chokeberry	#3	CONT	
48	CA	Clethra alnifolia	Summersweet	#3	CONT	
113	FG	Fothergilla gardenii	Dwarf Fothergilla	#3	CONT	
35	FM-MA	Fothergilla major 'Mt. Airy'	Mount Airy Fothergilla	#3	CONT	
115	FM	Fothergilla major	Large Fothergilla	#5	CONT	
201	IG	Rex glabra	holberry Holly	#3	CONT	
178	IV-F	Rex verticillata 'Winter Red'	Winterberry	#3	CONT	
10	IV-M	Rex verticillata 'Im Dandy'	Winterberry	#3	CONT	
256	J	Juniperus virginiana 'Grey Owl'	Juniper	#3	CONT	
276	MP	Myrica pennsylvanica	Bayberry	#5	CONT	
265	RR	Rosa rugosa 'Alba'	Beach Rose	#3	CONT	
91	VC	Vaccinium corymbosum	Highbush Blueberry	#3	CONT	
38	VD	Viburnum dentatum	Arrowwood viburnum	#5	CONT	
Street Tree Underplanting						
636	IG-C	Rex glabra 'Compacta'	holberry Holly	#3	CONT	
693	J	Juniperus virginiana 'Grey Owl'	Juniper	#3	CONT	
603	RR	Rosa rugosa 'Alba'	Beach Rose	#3	CONT	
Tree:						
Street Trees						
14	AR	Acer rubrum 'October Glory'	Red Maple	4" cal.	BAR	
15	QR	Quercus borealis 'Rubra'	Red Oak	4" cal.	BAR	
12	SI	Sophora japonica 'Regent'	Japanese Pagodatree	4" cal.	BAR	
35	TT	Tilia tomentosa 'Sterling Silver'	Silver Linden	4" cal.	BAR	
13	UP	Ulmus parvifolia 'Allee'	Chinese Elm	4" cal.	BAR	
Park & Biomedial Trees						
24	AC-S	Amenlanther canadensis	Shadblow - Small	5-6' clump	BAR	
24	AC-M	Amenlanther canadensis	Shadblow - Medium	8-10' clump	BAR	
3	AR-S	Acer rubrum	Red Maple - Small	2" cal.	BAR	
4	AR-M	Acer rubrum	Red Maple - Medium	3" cal.	BAR	
30	BR-S	Betula nigra	River Birch - Small	1-2' 50% max single / clump	BAR	
21	BR-M	Betula nigra	River Birch - Medium	3-10' 50% max single / clump	BAR	
6	JV-S	Juniperus virginiana	Red Cedar - Small	1-7'	BAR	
12	JV-M	Juniperus virginiana	Red Cedar - Medium	7-8'	BAR	
14	NS-S	Nyssa sylvatica	Black Tupelo - Small	2" cal.	BAR	
7	NS-M	Nyssa sylvatica	Black Tupelo - Medium	3" cal.	BAR	
Perennials & Grasses						
87	C-AC	Calamagrostis x acutiflora 'Kat Foerster'	Feather Reed Grass	#2	CONT	
74	EP	Eupatorium fistulosum	Joe Pye Weed	#2	CONT	
156	EP	Echinacea purpurea 'White Swan'	Echinacea	#2	CONT	
101	LS	Liatris scariosa	Tall Gayltheria	#2	CONT	
407	SH	Sporobolus heterolepis	Prairie Dropseed	#2	CONT	
162	SHA	Symphoricarpos novae-angliae	New England Aster	#2	CONT	
421	SS	Schizanthus scoparium	Little Bluestem	#2	CONT	

General Planting Plan Notes

- Contractor shall begin maintenance immediately after planting and shall continue until final acceptance. Contractor shall be responsible for all means and methods of watering and maintenance.
- The Landscape contractor shall supply all plant materials in quantities sufficient to complete all plantings shown on this drawing. Clarify any discrepancies with the landscape architect prior to ordering plant material.
- All materials shall conform to the guidelines established by the American Association of Nurserymen.
- All plants shall bear the same relationship to finish grade as the original grades before digging.
- The landscape contractor shall guarantee all plant materials for one(1) full year from date of substantial completion.
- All plant materials are subject to the approval of the landscape architect at the nursery and at the site.
- All areas of the site which have been disturbed and not otherwise developed shall be loamed with a minimum depth of 6" of topsoil and seeded as specified.
- Landscape contractor is encouraged to provide the landscape architect with concerns and/or suggestions with regard to proposed plant material selection prior to placing a purchase order.
- All trees located adjacent to walks and drives shall have 6' of clear height to first branching.
- Contractor shall verify all tree removals with landscape architect prior to start of construction.
- Contractor shall obtain approval for proposed lawn seed mix prior to installation.
- No plant shall be put into the ground before rough grading has been finished and approved by the project landscape architect.
- All plants shall be balled and wrapped or container grown as specified. No container grown stock will be accepted if it is root bound.
- All root wrapping material made of synthetics or plastics shall be removed at the time of planting.
- With container grown stock, the container shall be removed and the container ball shall be cut through the surface in two vertical locations.
- The location of trees, shrubs and bedlines shall be staked for approval by the landscape architect prior to installation. The contractor shall notify the landscape architect 48 hours prior to required site visit.
- All broad leaf evergreen plants shall be sprayed with an antidesiccant at the beginning of their first winter.
- All plants shall be installed as per details and the contract specifications. The landscape contractor shall refer to the contract specifications for additional requirements.
- All plants and stakes shall be set plumb unless otherwise specified.
- The landscape contractor shall provide loam fill as per the contract specifications.
- All plants shall be watered thoroughly twice during the first 24-hour period after planting. All plants shall then be watered by the contractor, as necessary to insure health until final acceptance.
- The landscape contractor shall refer to the plant list and planting specifications for seasonal requirements and other restrictions related to the time of planting.



PLAN KEY



MATCHLINE - SEE SHEET L-3.2
MARKET STREET STATION 301+35

ISSUE FOR BID

CITY OF PORTSMOUTH, NH
MARKET STREET GATEWAY
PLANTING PLAN

PROJECT No. 13121
DESIGNED BY: ...
CHECKED BY: ...
SCALE: 1"=20'



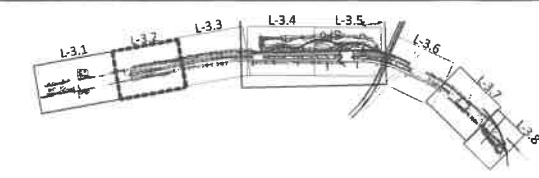
DATE: 11/9/2015
DRAWING No. L-3.1

no.	revision	revision	date	by
1			11/20/15	
			11/20/15	

OVERALL MARKET STREET CORRIDOR PLANTING SCHEDULE

General Planting Plan Notes

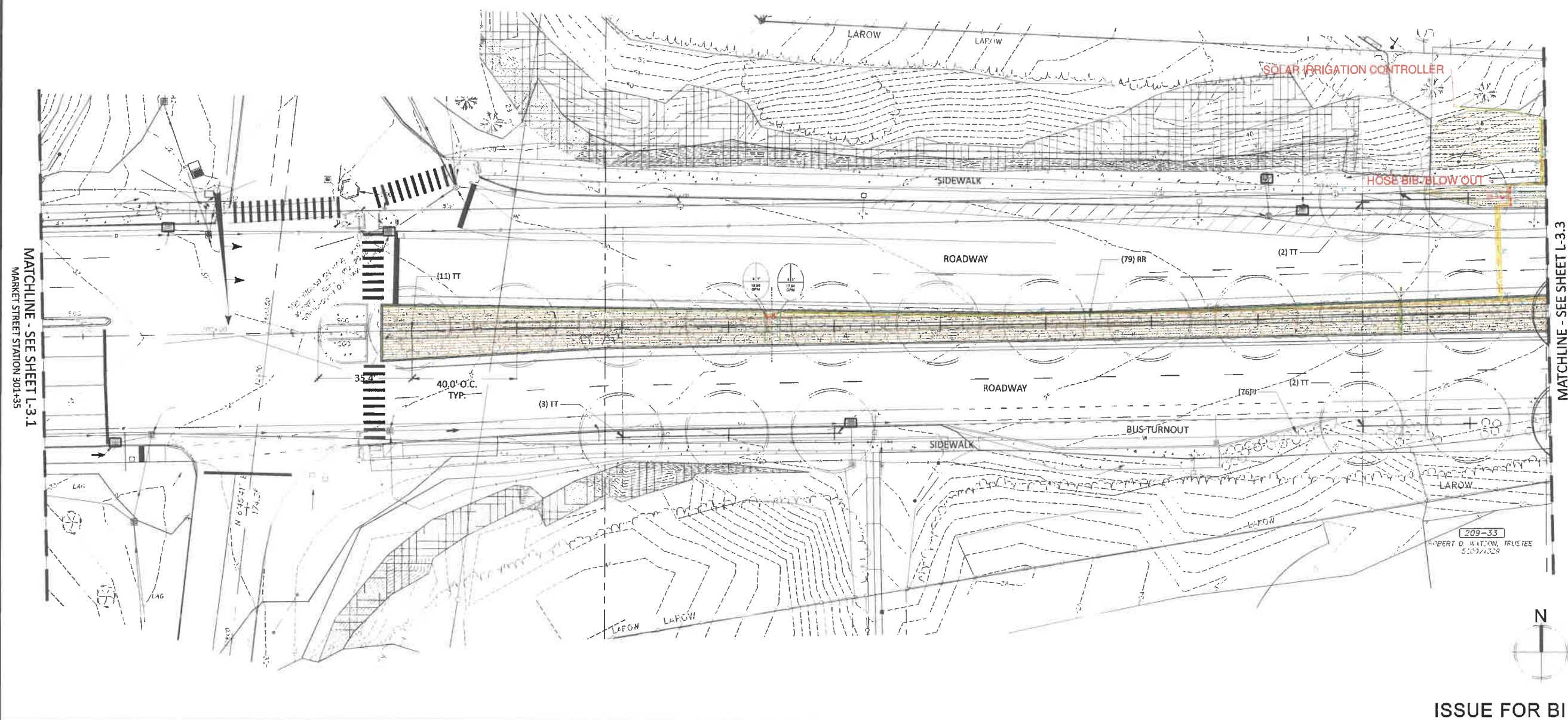
1. Contractor shall begin maintenance immediately after planting and shall continue until final acceptance. Contractor shall be responsible for all means and methods of watering and maintenance.
2. The Landscape contractor shall supply all plant materials in quantities sufficient to complete all plantings shown on this drawing. Clarify any discrepancies with the landscape architect prior to ordering plant material.
3. All materials shall conform to the guidelines established by the American Association of Nurserymen.
4. All plants shall bear the same relationship to finish grade as the original grades before digging.
5. The landscape contractor shall guarantee all plant materials for one(1) full year from date of substantial completion.
6. All plant materials are subject to the approval of the landscape architect at the nursery and at the site.
7. All areas of the site which have been disturbed and not otherwise developed shall be loamed with a minimum depth of 6" of topsoil and seeded as specified.
8. Landscape contractor is encouraged to provide the landscape architect with concerns and/or suggestions with regard to proposed plant material selection prior to placing a purchase order.
9. All trees located adjacent to walks and drives shall have 6' of clear height to first branching.
10. Contractor shall verify all tree removals with landscape architect prior to start of construction.
11. Contractor shall obtain approval for proposed lawn seed mix prior to installation.
12. No plant shall be put into the ground before rough grading has been finished and approved by the project landscape architect.
13. All plants shall be balled and wrapped or container grown as specified. No container grown stock will be accepted if it is root bound. All root wrapping material made of synthetics or plastics shall be removed at the time of planting.
14. With container grown stock, the container shall be removed and the container ball shall be cut through the surface in two vertical locations.
15. The location of trees, shrubs and bedlines shall be staked for approval by the landscape architect prior to installation. The contractor shall notify the landscape architect 48 hours prior to required site visit.
16. All trees located adjacent to walks and drives shall have 6' of clear height to first branching.
17. All plants shall be installed as per details and the contract specifications. The landscape contractor shall refer to the contract specifications for additional requirements.
18. All plants and stakes shall be set plumb unless otherwise specified.
19. The landscape contractor shall provide loam fill as per the contract specifications.
20. All plants shall be watered thoroughly twice during the first 24-hour period after planting. All plants shall then be watered by the contractor, as necessary to insure health until final acceptance.
21. The landscape contractor shall refer to the plant list and planting specifications for seasonal requirements and other restrictions related to the time of planting.



PLAN KEY

no.	revision	revision	date	by

PROJECT No. 13121	DESIGNED BY ...	CHECKED BY ...	SCALE 1"=20'
----------------------	--------------------	-------------------	-----------------



Irrigation AS-BUILT

CITY OF PORTSMOUTH, NH
MARKET STREET GATEWAY

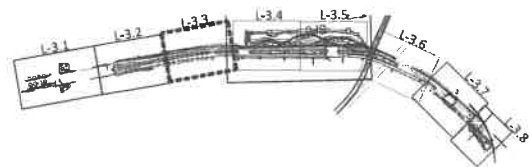
DATE: 11/9/2015
DRAWING No. L-3.2

ISSUE FOR BID

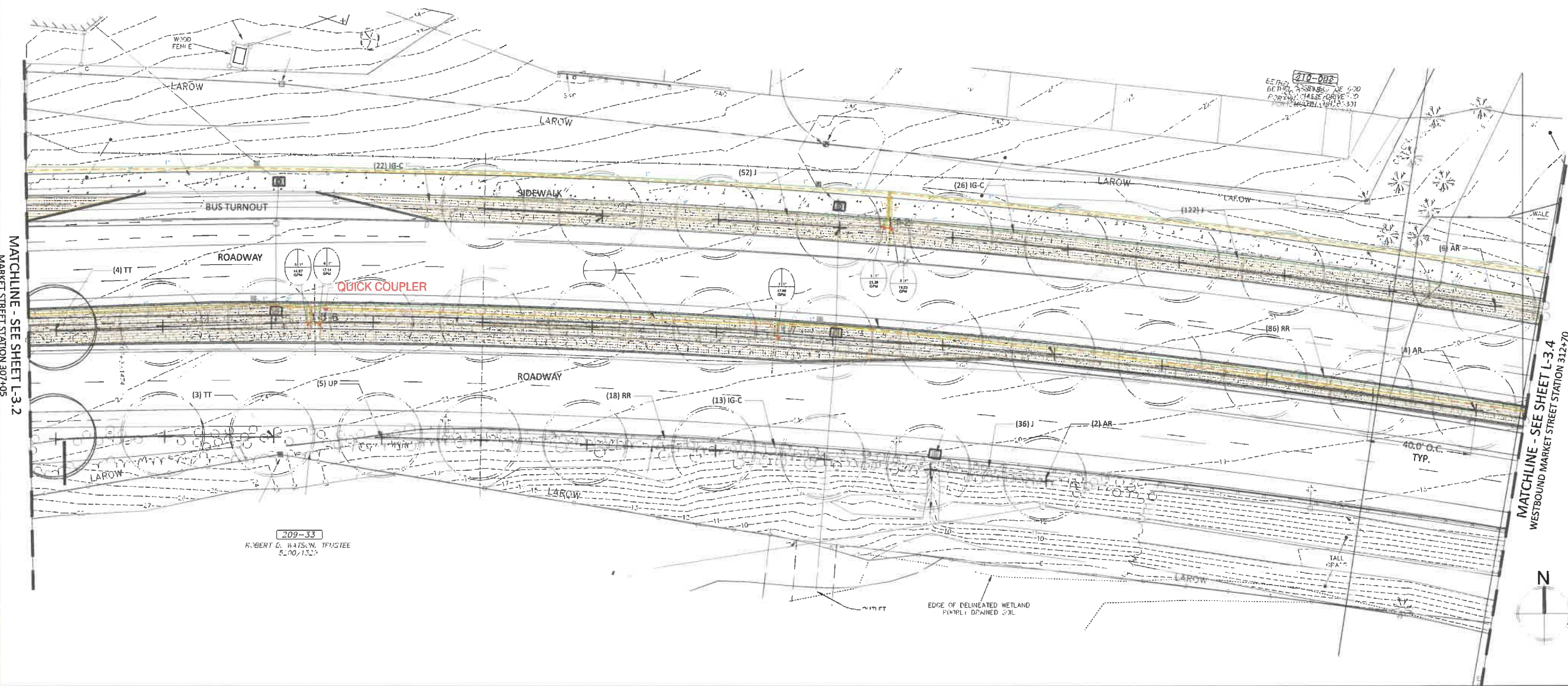
OVERALL MARKET STREET CORRIDOR PLANTING SCHEDULE

General Planting Plan Notes

1. Contractor shall begin maintenance immediately after planting and shall continue until final acceptance. Contractor shall be responsible for all means and methods of watering and maintenance.
2. The Landscape contractor shall supply all plant materials in quantities sufficient to complete all plantings shown on this drawing. Clarify any discrepancies with the landscape architect prior to ordering plant material.
3. All materials shall conform to the guidelines established by the American Association of Nurserymen.
4. All plants shall bear the same relationship to finish grade as the original grades before digging.
5. The landscape contractor shall guarantee all plant materials for one(1) full year from date of substantial completion.
6. All plant materials are subject to the approval of the landscape architect at the nursery and at the site.
7. All areas of the site which have been disturbed and not otherwise developed shall be loamed with a minimum depth of 6" of topsoil and seed as specified.
8. Landscape contractor is encouraged to provide the landscape architect with concerns and/or suggestions with regard to proposed plant material selection prior to placing a purchase order.
9. All trees located adjacent to walks and drives shall have 6' of clear height to first branching.
10. Contractor shall verify all tree removals with landscape architect prior to start of construction.
11. Contractor shall obtain approval for proposed lawn seed mix prior to installation.
12. No plant shall be put into the ground before rough grading has been finished and approved by the project landscape architect.
13. All plants shall be balled and wrapped or container grown as specified. No container grown stock will be accepted if it is root bound. All root wrapping material made of synthetics or plastics shall be removed at the time of planting.
14. With container grown stock, the container shall be removed and the container ball shall be cut through the surface in two vertical locations.
15. The location of trees, shrubs and bedlines shall be staked for approval by the landscape architect prior to installation. The contractor shall notify the landscape architect 48 hours prior to required site visit.
16. All broad leaf evergreen plants shall be sprayed with an antidesiccant at the beginning of their first winter.
17. All plants shall be installed as per details and the contract specifications. The landscape contractor shall refer to the contract specifications for additional requirements.
18. All plants and stakes shall be set plumb unless otherwise specified.
19. The landscape contractor shall provide loam fill as per the contract specifications.
20. All plants shall be watered thoroughly twice during the first 24-hour period after planting. All plants shall then be watered by the contractor, as necessary to insure health until final acceptance.
21. The landscape contractor shall refer to the plant list and planting specifications for seasonal requirements and other restrictions related to the time of planting.



PLAN KEY



NO.	REVISION	DATE	BY

PROJECT No. 18721
 DESIGNED BY
 CHECKED BY
 SCALE: 1"=20'

Irrigation AS-BUILT

ISSUE FOR BID

CITY OF PORTSMOUTH, NH

MARKET STREET GATEWAY

DATE: 11/9/2015
 DRAWING No. L-3.3

MATCHLINE - SEE SHEET L-3.2
 MARKET STREET STATION 307+05

MATCHLINE - SEE SHEET L-3.4
 WESTBOUND MARKET STREET STATION 312+70

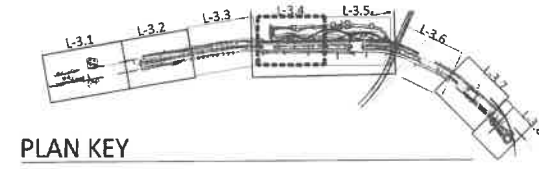
209-33
 ROBERT G. BATHUN, TRUSTEE
 5-20-1323



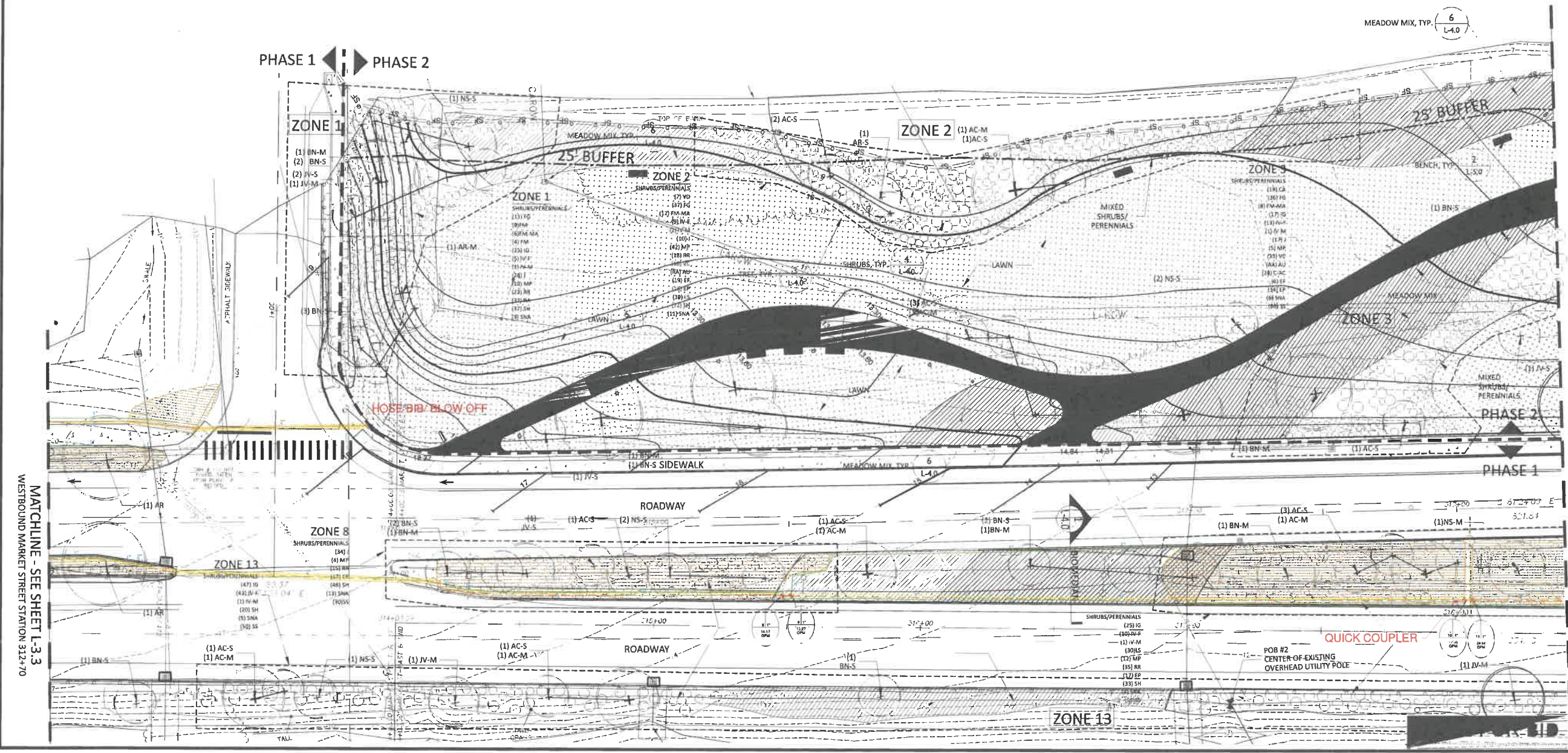
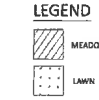
General Planting Plan Notes

1. Contractor shall begin maintenance immediately after planting and shall continue until final acceptance. Contractor shall be responsible for all means and methods of watering and maintenance.
2. The Landscape contractor shall supply all plant materials in quantities sufficient to complete all plantings shown on this drawing. Clarify any discrepancies with the landscape architect prior to ordering plant material.
3. All materials shall conform to the guidelines established by the American Association of Nurserymen.
4. All plants shall bear the same relationship to finish grade as the original grades before digging.
5. The landscape contractor shall guarantee all plant materials for one (1) full year from date of substantial completion.
6. All plant materials are subject to the approval of the landscape architect at the nursery and at the site.
7. All areas of the site which have been disturbed and not otherwise developed shall be loamed with a minimum depth of 6" of topsoil and seeded as specified.
8. Landscape contractor is encouraged to provide the landscape architect with concerns and/or suggestions with regard to proposed plant material selection prior to placing a purchase order.
9. All trees located adjacent to walks and drives shall have 6' of clear height to first branching.
10. Contractor shall verify all tree removals with landscape architect prior to start of construction.
11. Contractor shall obtain approval for proposed lawn seed mix prior to installation.
12. No plant shall be put into the ground before rough grading has been finished and approved by the project landscape architect.
13. All plants shall be balled and wrapped or container grown as specified. No container grown stock will be accepted if it is root bound. All root wrapping material made of synthetics or plastics shall be removed at the time of planting.
14. With container grown stock, the container shall be removed and the container ball shall be cut through the surface in two vertical locations.
15. The location of trees, shrubs and bedlines shall be staked for approval by the landscape architect prior to installation. The contractor shall notify the landscape architect 48 hours prior to required site visit.
16. All broad leaf evergreen plants shall be sprayed with an antidesiccant at the beginning of their first winter.
17. All plants shall be installed as per details and the contract specifications. The landscape contractor shall refer to the contract specifications for additional requirements.
18. All plants and stakes shall be set plumb unless otherwise specified.
19. The landscape contractor shall provide loam fill as per the contract specifications.
20. All plants shall be watered thoroughly twice during the first 24-hour period after planting. All plants shall then be watered by the contractor, as necessary to insure health until final acceptance.
21. The landscape contractor shall refer to the plant list and planting specifications for seasonal requirements and other restrictions related to the time of planting.

OVERALL MARKET STREET CORRIDOR PLANTING SCHEDULE



PLAN KEY



no.	revision	date	by

PROJECT No. 13121	DESIGNED BY:	CHECKED BY:	SCALE: 1"=20'
----------------------	--------------	-------------	------------------

Irrigation AS-BUILT

MATCHLINE - SEE SHEET L-3.3
WESTBOUND MARKET STREET STATION 312+70

MATCHLINE - SEE SHEET L-3.5
WESTBOUND MARKET STREET STATION 318+40

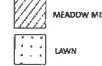
CITY OF PORTSMOUTH, NH
MARKET STREET GATEWAY

DATE: 11/9/2015
DRAWING No. L-3.4

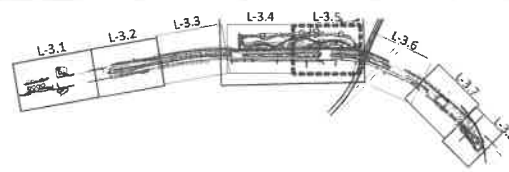
General Planting Plan Notes

- Contractor shall begin maintenance immediately after planting and shall continue until final acceptance. Contractor shall be responsible for all means and methods of watering and maintenance.
- The Landscape contractor shall supply all plant materials in quantities sufficient to complete all plantings shown on this drawing. Clarify any discrepancies with the landscape architect prior to ordering plant material.
- All materials shall conform to the guidelines established by the American Association of Nurserymen.
- All plants shall bear the same relationship to finish grade as the original grades before digging.
- The landscape contractor shall guarantee all plant materials for one (1) full year from date of substantial completion.
- All plant materials are subject to the approval of the landscape architect at the nursery and at the site.
- All areas of the site which have been disturbed and not otherwise developed shall be loamed with a minimum depth of 8" of topsoil and seeded as specified.
- Landscape contractor is encouraged to provide the landscape architect with concerns and/or suggestions with regard to proposed plant material selection prior to placing a purchase order.
- All trees located adjacent to walks and drives shall have 6' of clear height to first branching.
- Contractor shall verify all tree removals with landscape architect prior to start of construction.
- Contractor shall obtain approval for proposed lawn seed mix prior to installation.
- No plant shall be put into the ground before rough grading has been finished and approved by the project landscape architect.
- All plants shall be balled and wrapped or container grown as specified. No container grown stock will be accepted if it is root bound. All root wrapping material made of synthetics or plastics shall be removed at the time of planting.
- With container grown stock, the container shall be removed and the container ball shall be cut through the surface in two vertical locations.
- The location of trees, shrubs and bedlines shall be staked for approval by the landscape architect prior to installation. The contractor shall notify the landscape architect 48 hours prior to required site visit.
- All broad leaf evergreen plants shall be sprayed with an antidesiccant at the beginning of their first winter.
- All plants shall be installed as per details and the contract specifications. The landscape contractor shall refer to the contract specifications for additional requirements.
- All plants and stakes shall be set plumb unless otherwise specified.
- The landscape contractor shall provide loam fill as per the contract specifications.
- All plants shall be watered thoroughly twice during the first 24-hour period after planting. All plants shall then be watered by the contractor, as necessary to insure health until final acceptance.
- The landscape contractor shall refer to the plant list and planting specifications for seasonal requirements and other restrictions related to the time of planting.

LEGEND



PLAN KEY



OVERALL MARKET STREET CORRIDOR PLANTING SCHEDULE

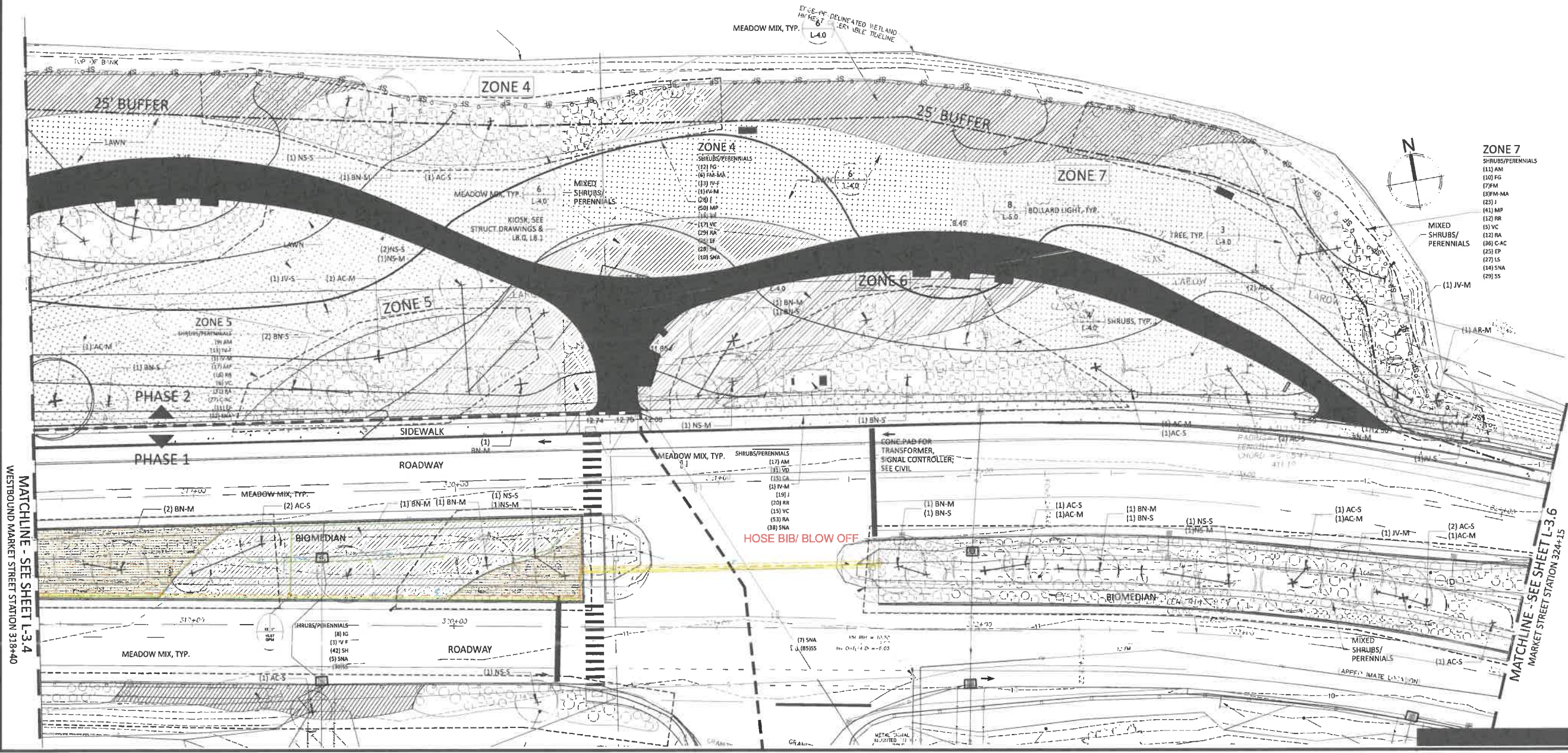
no.	revision	date	by

PROJECT No. 13121	DESIGNED BY:	CHECKED BY:	SCALE: 1"=20'
----------------------	--------------	-------------	------------------

Irrigation AS-BUILT

CITY OF PORTSMOUTH, NH
MARKET STREET GATEWAY

DATE: 11/9/2015
DRAWING No. L-3.5

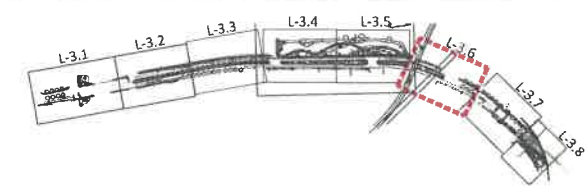


OVERALL MARKET STREET CORRIDOR PLANTING SCHEDULE

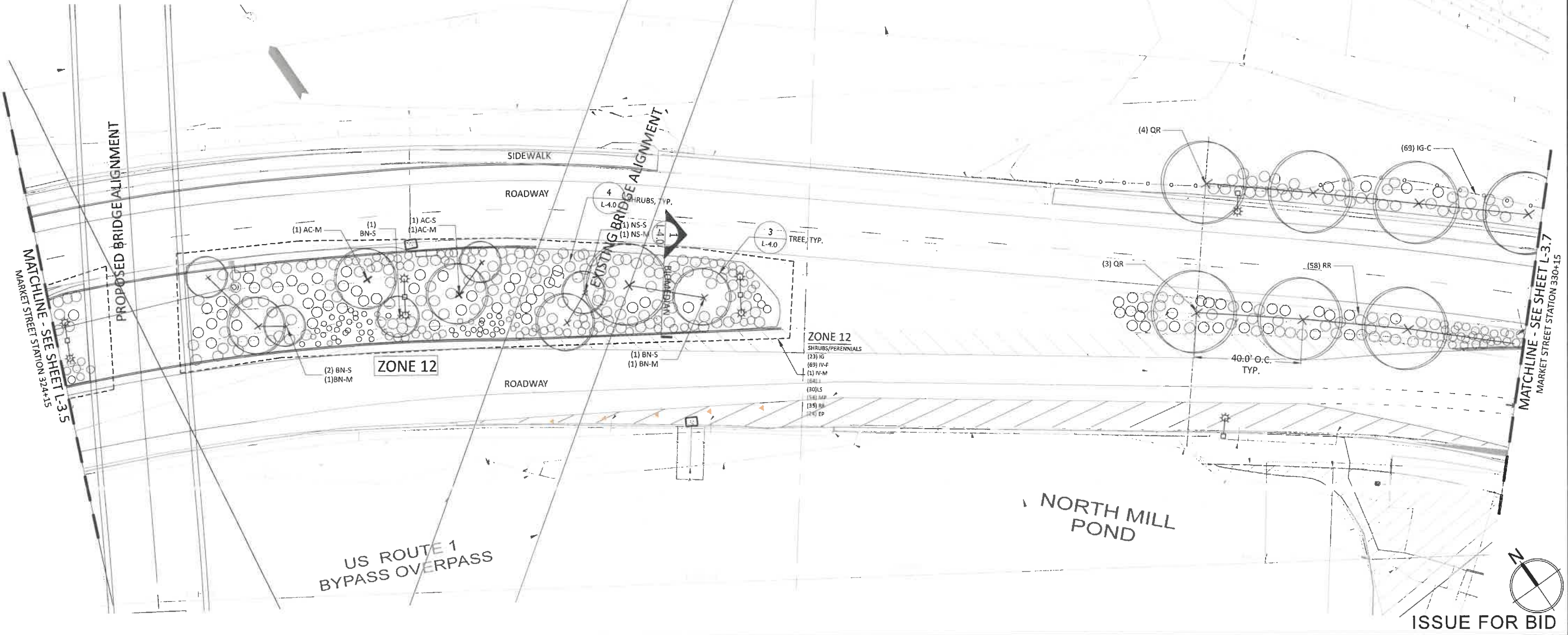
TYPE	QUANTITY	KEY	BOTANICAL NAME	COMMON NAME	SIZE	ROOT
Meadow Mix	50,000 SF		"New England Coastal Salt-Tolerant Grass Mix" by New England Wetland Plants, Inc. (Or approved alternative)			
Groundcover	278	RA	Rhus aromatica 'Grow low'	Grow-low Fragrant Sumac	#3	CONT
Shrubs						
Parks & Bioretention Shrubs	51	AM	Aronia melanocarpa	Black Chokeberry	#3	CONT
	48	CA	Clethra alnifolia	Summersweet	#3	CONT
	133	FG	Fothergilla gardenii	Dwarf Fothergilla	#3	CONT
	35	FM-MA	Fothergilla major 'Mt. Airy'	Mount Airy Fothergilla	#3	CONT
	15	FM	Fothergilla major	Large Fothergilla	#3	CONT
	201	IG	Ilex glabra	Inkberry Holly	#3	CONT
	178	IV-F	Ilex verticillata 'Winter Red'	Winterberry	#3	CONT
	10	IV-M	Ilex verticillata 'Jim Dandy'	Winterberry	#3	CONT
	256	J	Juniperus virginiana 'Grey Owl'	Juniper	#3	CONT
	278	MP	Myrica pennsylvanica	Bayberry	#5	CONT
	263	RR	Rosa rugosa 'Alba'	Beach Rose	#3	CONT
	91	VC	Vaccinium corymbosum	Highbush Blueberry	#3	CONT
	38	VD	Viburnum dentatum	Arrowwood Viburnum	#5	CONT
Street Tree Underplanting						
	636	IG-C	Ilex glabra 'Compacta'	Inkberry Holly	#3	CONT
	693	J	Juniperus virginiana 'Grey Owl'	Juniper	#3	CONT
	603	RR	Rosa rugosa 'Alba'	Beach Rose	#3	CONT
Trees						
Street Trees						
	14	AR	Acer rubrum 'October Glory'	Red Maple	4" cal.	B&B
	15	OR	Quercus borealis 'Rubra'	Red Oak	4" cal.	B&B
	12	SJ	Seyhora japonica 'Regent'	Japanese Pagodatree	4" cal.	B&B
	35	TT	Tilia tomentosa 'Sterling Silver'	Silver Linden	4" cal.	B&B
	13	UP	Ulmus parvifolia 'Altee'	Chinese Elm	4" cal.	B&B
Park & Bioretention Trees						
	24	AC-S	Amelanchier canadensis	Shadbowl - Small	5-6' clump	B&B
	24	AC-M	Amelanchier canadensis	Shadbowl - Medium	8-10' clump	B&B
	9	AR-S	Acer rubrum	Red Maple - Small	2" cal.	B&B
	4	AR-M	Acer rubrum	Red Maple - Medium	2" cal.	B&B
	30	BN-S	Betula nigra	River Birch - Small	6-8' 50% mix single / clump	B&B
	21	BN-M	Betula nigra	River Birch - Medium	8-10' 50% mix single / clump	B&B
	6	JV-S	Juniperus virginiana	Red Cedar - Small	6-7'	B&B
	12	JV-M	Juniperus virginiana	Red Cedar - Medium	7-8'	B&B
	14	NS-S	Nyssa sylvatica	Black Tupelo - Small	2" cal.	B&B
	7	NS-M	Nyssa sylvatica	Black Tupelo - Medium	3" cal.	B&B
Perennials & Grasses						
	87	C-AC	Calamagrostis x acutiflora 'Karl Foerster'	Feather Reed Grass	#2	CONT
	74	EF	Eupatorium fistulosum	Joe Pye Weed	#2	CONT
	156	EP	Echinacea purpurea 'White Swan'	Echinacea	#2	CONT
	101	LS	Liatris scariosa	Tall Gayfeather	#3	CONT
	407	SH	Sporobolus heterolepis	Prairie Dropseed	#2	CONT
	162	SNA	Symphoricarpos rosea-anthelm	New England Aster	#2	CONT
	421	SS	Schizanthus scopolium	Little Bluestem	#2	CONT

General Planting Plan Notes

- Contractor shall begin maintenance immediately after planting and shall continue until final acceptance. Contractor shall be responsible for all means and methods of watering and maintenance.
- The Landscape contractor shall supply all plant materials in quantities sufficient to complete all plantings shown on this drawing. Clarify any discrepancies with the landscape architect prior to ordering plant material.
- All materials shall conform to the guidelines established by the American Association of Nurserymen.
- All plants shall bear the same relationship to finish grade as the original grades before digging.
- The landscape contractor shall guarantee all plant materials for one(1) full year from date of substantial completion.
- All plant materials are subject to the approval of the landscape architect at the nursery and at the site.
- All areas of the site which have been disturbed and not otherwise developed shall be loamed with a minimum depth of 6" of topsoil and seeded as specified.
- Landscape contractor is encouraged to provide the landscape architect with concerns and/or suggestions with regard to proposed plant material selection prior to placing a purchase order.
- All trees located adjacent to walks and drives shall have 6' of clear height to first branching.
- Contractor shall verify all tree removals with landscape architect prior to start of construction.
- Contractor shall obtain approval for proposed lawn seed mix prior to installation.
- No plant shall be put into the ground before rough grading has been finished and approved by the project landscape architect.
- All plants shall be balled and wrapped or container grown as specified. No container grown stock will be accepted if it is root bound. All root wrapping material made of synthetics or plastics shall be removed at the time of planting.
- With container grown stock, the container shall be removed and the container ball shall be cut through the surface in two vertical locations.
- The location of trees, shrubs and bedlines shall be staked for approval by the landscape architect prior to installation. The contractor shall notify the landscape architect 48 hours prior to required site visit.
- All broad leaf evergreen plants shall be sprayed with an antidesiccant at the beginning of their first winter.
- All plants shall be installed as per details and the contract specifications. The landscape contractor shall refer to the contract specifications for additional requirements.
- All plants and stakes shall be set plumb unless otherwise specified.
- The landscape contractor shall provide loam fill as per the contract specifications.
- All plants shall be watered thoroughly twice during the first 24-hour period after planting. All plants shall then be watered by the contractor, as necessary to insure health until final acceptance.
- The landscape contractor shall refer to the plant list and planting specifications for seasonal requirements and other restrictions related to the time of planting.



PLAN KEY



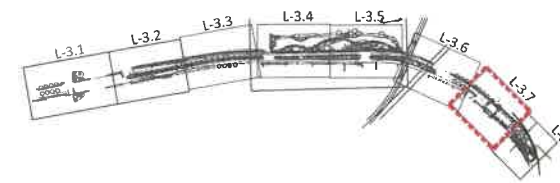
PROJECT No.	13121
DESIGNED BY:	
CHECKED BY:	
SCALE:	1"=20'
CITY OF PORTSMOUTH, NH	
MARKET STREET GATEWAY	
PLANTING PLAN	
DATE:	11/9/2015
DRAWING No.	L-3.6

OVERALL MARKET STREET CORRIDOR PLANTING SCHEDULE

TYPE	QUANTITY	KEY	BOTANICAL NAME	COMMON NAME	SIZE	ROOT
Meadow Mix	50,000 SF		"New England Coastal Salt-Tolerant Grass Mix" by New England Wetland Plants, Inc. (Or approved alternative)			
Groundcover	278	RA	Rhus aromatica 'Grow low'	Grow-low Fragrant Sumac	#3	CONT
Shrubs						
Park & Biomedial Shrubs						
51	AM		Amelanchier canadensis	Black Chokeberry	#3	CONT
48	CA		Clethra alnifolia	Summersweet	#3	CONT
113	FG		Fothergilla gardenii	Dwarf Fothergilla	#3	CONT
35	FM-MA		Fothergilla major 'Mt. Airy'	Mount Airy Fothergilla	#3	CONT
15	FM		Fothergilla major	Large Fothergilla	#5	CONT
201	IG		Ilex glabra	Inkberry Holly	#3	CONT
178	N-F		Ilex verticillata 'Winter Red'	Winterberry	#3	CONT
10	IV-M		Ilex verticillata 'Jim Dandy'	Winterberry	#3	CONT
256	J		Juniperus virginiana 'Grey Owl'	Juniper	#3	CONT
276	MP		Nyctaginia pennsylvanica	Bayberry	#5	CONT
265	RR		Rosa rugosa 'Alba'	Beach Rose	#3	CONT
91	VC		Vaccinium corymbosum	Highbush Blueberry	#3	CONT
58	VD		Viburnum dentatum	Aronwood viburnum	#5	CONT
Street Tree Underplanting						
636	IG-C		Ilex glabra 'Compacta'	Inkberry Holly	#3	CONT
653	J		Juniperus virginiana 'Grey Owl'	Juniper	#3	CONT
603	RR		Rosa rugosa 'Alba'	Beach Rose	#3	CONT
Trees						
Street Trees						
14	AR		Acer rubrum 'October Glory'	Red Maple	4" cal.	B&B
15	QR		Quercus borealis 'Rubra'	Red Oak	4" cal.	B&B
12	SI		Sophora japonica 'Allegot'	Japanese Pagodatree	4" cal.	B&B
35	TT		Tilia tomentosa 'Stargling Silver'	Silver Linden	4" cal.	B&B
13	UP		Ulmus parvifolia 'Allee'	Chinese Elm	4" cal.	B&B
Park & Biomedial Trees						
24	AC-S		Amelanchier canadensis	Shadbloem - Small	5-6' clump	B&B
24	AC-M		Amelanchier canadensis	Shadbloem - Medium	8-10' clump	B&B
3	AR-S		Acer rubrum	Red Maple - Small	2" cal.	B&B
4	AR-M		Acer rubrum	Red Maple - Medium	3" cal.	B&B
30	BH-S		Betula nigra	River Birch - Small	6-8' 50% max single / clump	B&B
21	BH-M		Betula nigra	River Birch - Medium	8-10' 50% max single / clump	B&B
6	JV-S		Juniperus virginiana	Red Cedar - Small	6-7'	B&B
12	JV-M		Juniperus virginiana	Red Cedar - Medium	7-8'	B&B
14	NS-S		Nyssa sylvatica	Black Tupelo - Small	2" cal.	B&B
7	NS-M		Nyssa sylvatica	Black Tupelo - Medium	3" cal.	B&B
Perennials & Grasses						
87	C-AC		Calamagrostis x acutiflora 'Karl Foerster'	Feather Reed Grass	#2	CONT
74	EP		Eupatorium fistulosum	Joe Pye Weed	#2	CONT
156	EP		Echinacea purpurea 'White Swan'	Echinacea	#2	CONT
191	LS		Liatris scariosa	Tall Gayfeather	#2	CONT
407	SH		Sporobolus heterolepis	Prairie Dropseed	#2	CONT
167	SMA		Symphoricarpos novae-angliae	New England Aster	#2	CONT
428	SS		Schizachyrium scoparium	Little Bluestem	#2	CONT

General Planting Plan Notes

- Contractor shall begin maintenance immediately after planting and shall continue until final acceptance. Contractor shall be responsible for all means and methods of watering and maintenance.
- The Landscape contractor shall supply all plant materials in quantities sufficient to complete all plantings shown on this drawing. Clarify any discrepancies with the landscape architect prior to ordering plant material.
- All materials shall conform to the guidelines established by the American Association of Nurserymen.
- All plants shall bear the same relationship to finish grade as the original grades before digging.
- The landscape contractor shall guarantee all plant materials for one (1) full year from date of substantial completion.
- All plant materials are subject to the approval of the landscape architect at the nursery and at the site.
- All areas of the site which have been disturbed and not otherwise developed shall be loamed with a minimum depth of 6" of topsoil and seeded as specified.
- Landscape contractor is encouraged to provide the landscape architect with concerns and/or suggestions with regard to proposed plant material selection prior to placing a purchase order.
- All trees located adjacent to walks and drives shall have 6' of clear height to first branching.
- Contractor shall verify all tree removals with landscape architect prior to start of construction.
- Contractor shall obtain approval for proposed lawn seed mix prior to installation.
- No plant shall be put into the ground before rough grading has been finished and approved by the project landscape architect.
- All plants shall be balled and wrapped or container grown as specified. No container grown stock will be accepted if it is root bound. All root wrapping material made of synthetics or plastics shall be removed at the time of planting.
- With container grown stock, the container shall be removed and the container ball shall be cut through the surface in two vertical locations.
- The location of trees, shrubs and bedlines shall be staked for approval by the landscape architect prior to installation. The contractor shall notify the landscape architect 48 hours prior to required site visit.
- All broad leaf evergreen plants shall be sprayed with an antidesiccant at the beginning of their first winter.
- All plants shall be installed as per details and the contract specifications. The landscape contractor shall refer to the contract specifications for additional requirements.
- All plants and stakes shall be set plumb unless otherwise specified.
- The landscape contractor shall provide loam fill as per the contract specifications.
- All plants shall be watered thoroughly twice during the first 24-hour period after planting. All plants shall then be watered by the contractor, as necessary to insure health until final acceptance.
- The landscape contractor shall refer to the plant list and planting specifications for seasonal requirements and other restrictions related to the time of planting.



PLAN KEY

no.	revision	revision	date	by
1			3/20/15	
2			8/8/15	

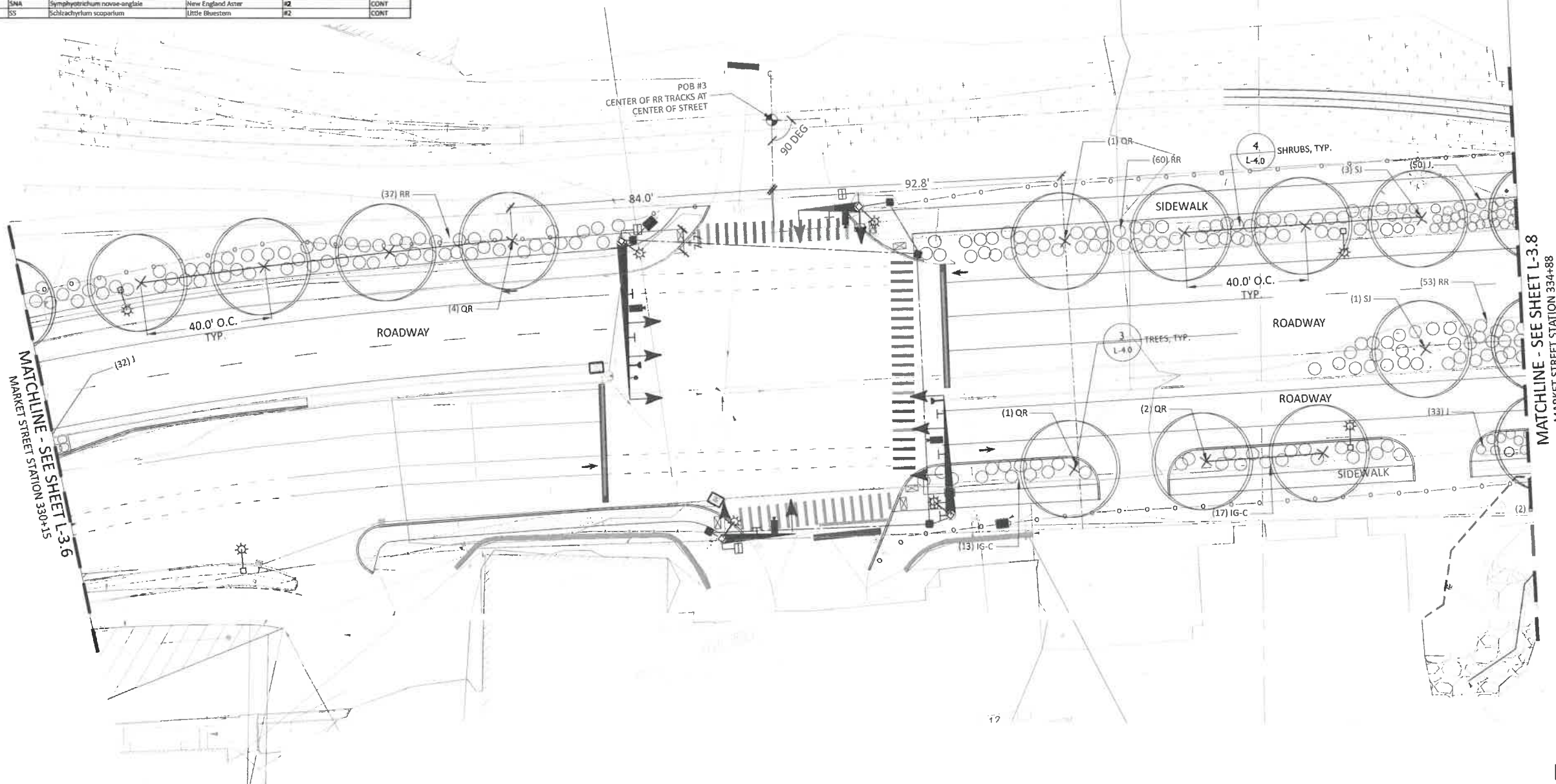
PROJECT No. 13121	DESIGNED BY:	CHECKED BY:	SCALE: 1"=20'
----------------------	--------------	-------------	------------------

RSG
the science of insight
49 South Main St., Suite 203, Concord, NH 03302
866.774.5882

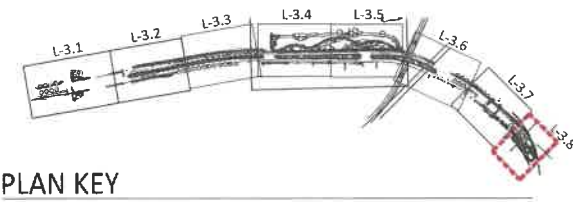
Richardson & Associates
Landscape Architects

CITY OF PORTSMOUTH, NH
MARKET STREET GATEWAY
PLANTING PLAN

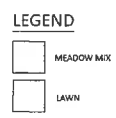
DATE: 11/9/2015
DRAWING No. L-3.7



ISSUE FOR BID

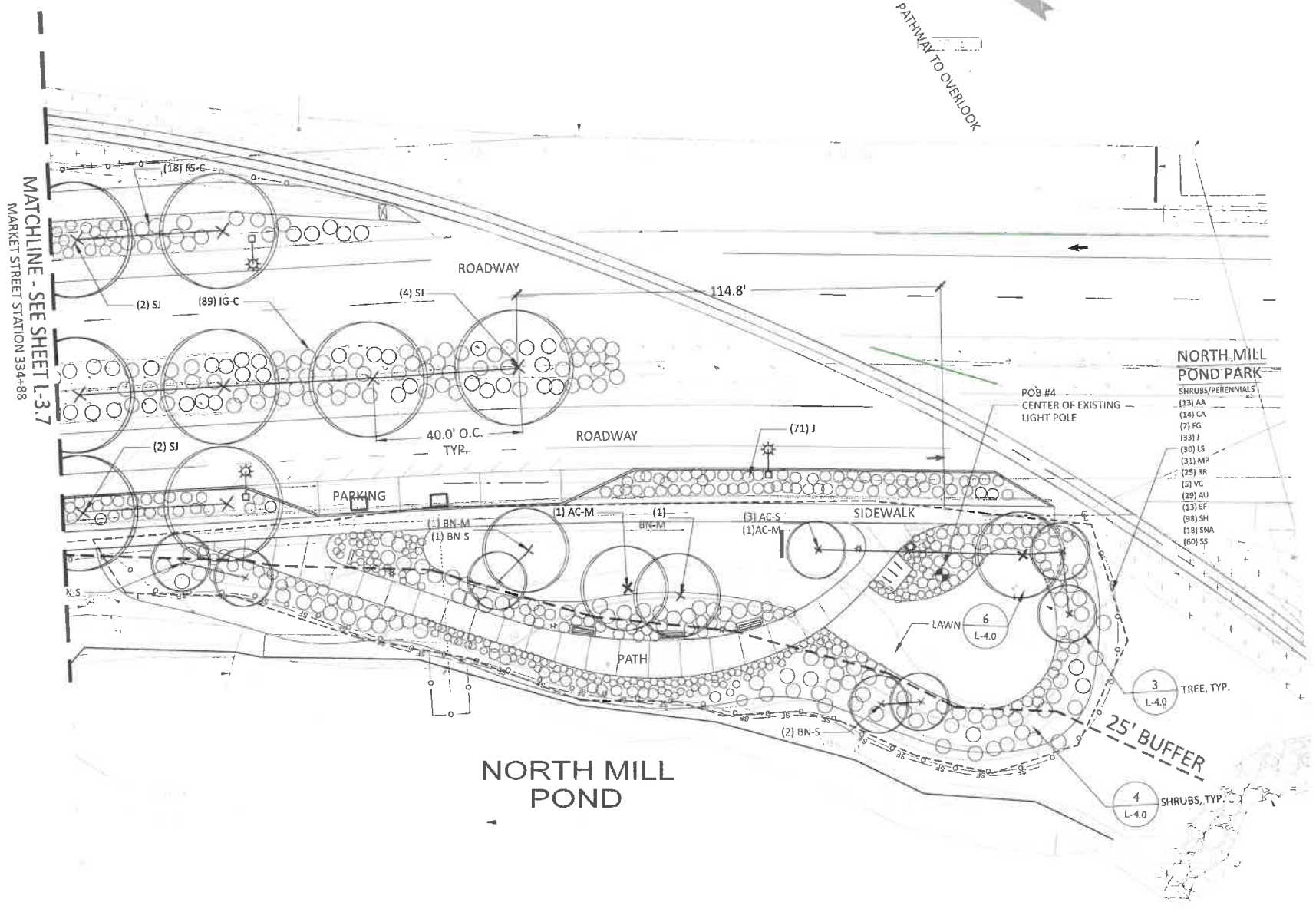


PLAN KEY



General Planting Plan Notes

1. Contractor shall begin maintenance immediately after planting and shall continue until final acceptance. Contractor shall be responsible for all means and methods of watering and maintenance.
2. The Landscape contractor shall supply all plant materials in quantities sufficient to complete all plantings shown on this drawing. Clarify any discrepancies with the landscape architect prior to ordering plant material.
3. All materials shall conform to the guidelines established by the American Association of Nurserymen.
4. All plants shall bear the same relationship to finish grade as the original grades before digging.
5. The Landscape contractor shall guarantee all plant materials for one(1) full year from date of substantial completion.
6. All plant materials are subject to the approval of the landscape architect at the nursery and at the site.
7. All areas of the site which have been disturbed and not otherwise developed shall be loamed with a minimum depth of 6" of topsoil and seeded as specified.
8. Landscape contractor is encouraged to provide the landscape architect with concerns and/or suggestions with regard to proposed plant material selection prior to placing a purchase order.
9. All trees located adjacent to walks and drives shall have 6' of clear height to first branching.
10. Contractor shall verify all tree removals with landscape architect prior to start of construction.
11. Contractor shall obtain approval for proposed lawn seed mix prior to installation.
12. No plant shall be put into the ground before rough grading has been finished and approved by the project landscape architect.
13. All plants shall be balled and wrapped or container grown as specified. No container grown stock will be accepted if it is root bound. All root wrapping material made of synthetics or plastics shall be removed at the time of planting.
14. With container grown stock, the container shall be removed and the container ball shall be cut through the surface in two vertical locations.
15. The location of trees, shrubs and bedlines shall be staked for approval by the landscape architect prior to installation. The contractor shall notify the landscape architect 48 hours prior to required site visit.
16. All broad leaf evergreen plants shall be sprayed with an antidesiccant at the beginning of their first winter.
17. All plants shall be installed as per details and the contract specifications. The landscape contractor shall refer to the contract specifications for additional requirements.
18. All plants and stakes shall be set plumb unless otherwise specified.
19. The landscape contractor shall provide loam fill as per the contract specifications.
20. All plants shall be watered thoroughly twice during the first 24-hour period after planting. All plants shall then be watered by the contractor, as necessary to insure health until final acceptance.
21. The landscape contractor shall refer to the plant list and planting specifications for seasonal requirements and other restrictions related to the time of planting.



OVERALL MARKET STREET CORRIDOR PLANTING SCHEDULE

TYPE	QUANTITY	KEY	BOTANICAL NAME	COMMON NAME	SIZE	ROOT
Meadow Mix	50,000 SF		"New England Coastal Salt-Tolerant Grass Mix" by New England Wetland Plants, Inc. (Or approved alternative)			
Groundcover	278	RA	Rhus aromatica 'Grow low'	Grow-low Fragrant Sassa	#3	CONT
Shrubs						
Park & Biomedical Shrubs						
51	AM	Aronia melanocarpa	Black Chokeberry	#3	CONT	
48	CA	Ceanothus americanus	Summer Sweet	#3	CONT	
113	FG	Fothergilla gardenii	Dwarf Fothergilla	#3	CONT	
35	FM	Fothergilla major 'Mt. Airy'	Mount Airy Fothergilla	#3	CONT	
15	FM	Fothergilla major	Large Fothergilla	#5	CONT	
201	NS	Ilex glabra	Inkberry Holly	#3	CONT	
178	IV-F	Ilex verticillata 'Winter Red'	Winterberry	#3	CONT	
10	IV-M	Ilex verticillata 'Jim Dandy'	Winterberry	#3	CONT	
256	J	Juniperus virginiana 'Grey Owl'	Juniper	#3	CONT	
276	MP	Myrica pennsylvanica	Bayberry	#5	CONT	
265	RR	Rosa rugosa 'Alba'	Beach Rose	#3	CONT	
91	VC	Vaccinium corymbosum	Highbush Blueberry	#3	CONT	
98	VD	Viburnum dentatum	Arrowwood Viburnum	#5	CONT	
Street Tree Underplanting						
636	IG-C	Ilex glabra 'Compacta'	Inkberry Holly	#3	CONT	
683	J	Juniperus virginiana 'Grey Owl'	Juniper	#3	CONT	
603	RR	Rosa rugosa 'Alba'	Beach Rose	#3	CONT	
Trees						
Street Trees						
14	AM	Acer rubrum 'October Glory'	Red Maple	4" cal.	B&B	
15	OR	Quercus borealis 'Rubra'	Red Oak	4" cal.	B&B	
12	SJ	Sophora japonica 'Regent'	Japanese Pagodatree	4" cal.	B&B	
15	TT	Tilia tomentosa 'Sterling Silver'	Silver Linden	4" cal.	B&B	
13	UP	Ulmus parvifolia 'Adele'	Chinese Elm	4" cal.	B&B	
Park & Biomedical Trees						
24	AC-S	Amelanchier canadensis	Shadblow - Small	1-1' clump	B&B	
24	AC-M	Amelanchier canadensis	Shadblow - Medium	1-10' clump	B&B	
3	AR-S	Acer rubrum	Red Maple - Small	2" cal.	B&B	
4	AR-M	Acer rubrum	Red Maple - Medium	3" cal.	B&B	
30	BN-S	Betula nigra	River Birch - Small	6-8' 50% mix single / clump	B&B	
21	BN-M	Betula nigra	River Birch - Medium	8-10' 50% mix single / clump	B&B	
6	JV-S	Juniperus virginiana	Red Cedar - Small	6-7'	B&B	
12	JV-M	Juniperus virginiana	Red Cedar - Medium	7-8'	B&B	
14	NS-S	Nyssa sylvatica	Black Tupelo - Small	2" cal.	B&B	
7	NS-M	Nyssa sylvatica	Black Tupelo - Medium	3" cal.	B&B	
Perennials & Grasses						
87	C-AC	Calamagrostis x acutiflora 'Karl Foerster'	Feather Reed Grass	#2	CONT	
74	EF	Eupatorium fistulosum	Joe Pye Weed	#2	CONT	
156	EP	Echinacea purpurea 'White Swan'	Echinacea	#2	CONT	
151	LS	Latris scariosa	Tall Gayfeather	#2	CONT	
487	SH	Sporobolus heterolepis	Prairie Dropseed	#2	CONT	
162	SNA	Symphoricarpon novae-angliae	New England Aster	#2	CONT	
421	SS	Schizachyrium scoparium	Little Bluestem	#2	CONT	

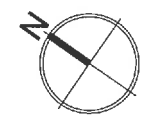
no.	revision	date	by
1		11/20/15	
2			

PROJECT No. 13121
 DESIGNED BY: ...
 CHECKED BY: ...
 SCALE: 1"=20'

CITY OF PORTSMOUTH, NH
 MARKET STREET GATEWAY
 PLANTING PLAN

DATE: 11/9/2015
 DRAWING No. L-3.8

ISSUE FOR BID

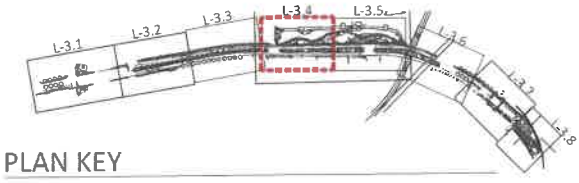


General Planting Plan Notes

- Contractor shall begin maintenance immediately after planting and shall continue until final acceptance. Contractor shall be responsible for all means and methods of watering and maintenance.
- The Landscape contractor shall supply all plant materials in quantities sufficient to complete all plantings shown on this drawing. Clarify any discrepancies with the landscape architect prior to ordering plant material.
- All materials shall conform to the guidelines established by the American Association of Nurserymen.
- All plants shall bear the same relationship to finish grade as the original grades before digging.
- The landscape contractor shall guarantee all plant materials for one(1) full year from date of substantial completion.
- All plant materials are subject to the approval of the landscape architect at the nursery and at the site.
- All areas of the site which have been disturbed and not otherwise developed shall be loamed with a minimum depth of 6" of topsoil and seeded as specified.
- Landscape contractor is encouraged to provide the landscape architect with concerns and/or suggestions with regard to proposed plant material selection prior to placing a purchase order.
- All trees located adjacent to walks and drives shall have 6' of clear height to first branching.
- Contractor shall verify all tree removals with landscape architect prior to start of construction.
- Contractor shall obtain approval for proposed lawn seed mix prior to installation.
- No plant shall be put into the ground before rough grading has been finished and approved by the project landscape architect.
- All plants shall be balled and wrapped or container grown as specified. No container grown stock will be accepted if it is root bound. All root wrapping material made of synthetics or plastics shall be removed at the time of planting.
- With container grown stock, the container shall be removed and the container ball shall be cut through the surface in two vertical locations.
- The location of trees, shrubs and bedlines shall be staked for approval by the landscape architect prior to installation. The contractor shall notify the landscape architect 48 hours prior to required site visit.
- All broad leaf evergreen plants shall be sprayed with an antidesiccant at the beginning of their first winter.
- All plants shall be installed as per details and the contract specifications. The landscape contractor shall refer to the contract specifications for additional requirements.
- All plants and stakes shall be set plumb unless otherwise specified.
- The landscape contractor shall provide loam fill as per the contract specifications.
- All plants shall be watered thoroughly twice during the first 24-hour period after planting. All plants shall then be watered by the contractor, as necessary to insure health until final acceptance.
- The landscape contractor shall refer to the plant list and planting specifications for seasonal requirements and other restrictions related to the time of planting.

OVERALL MARKET STREET CORRIDOR PLANTING SCHEDULE

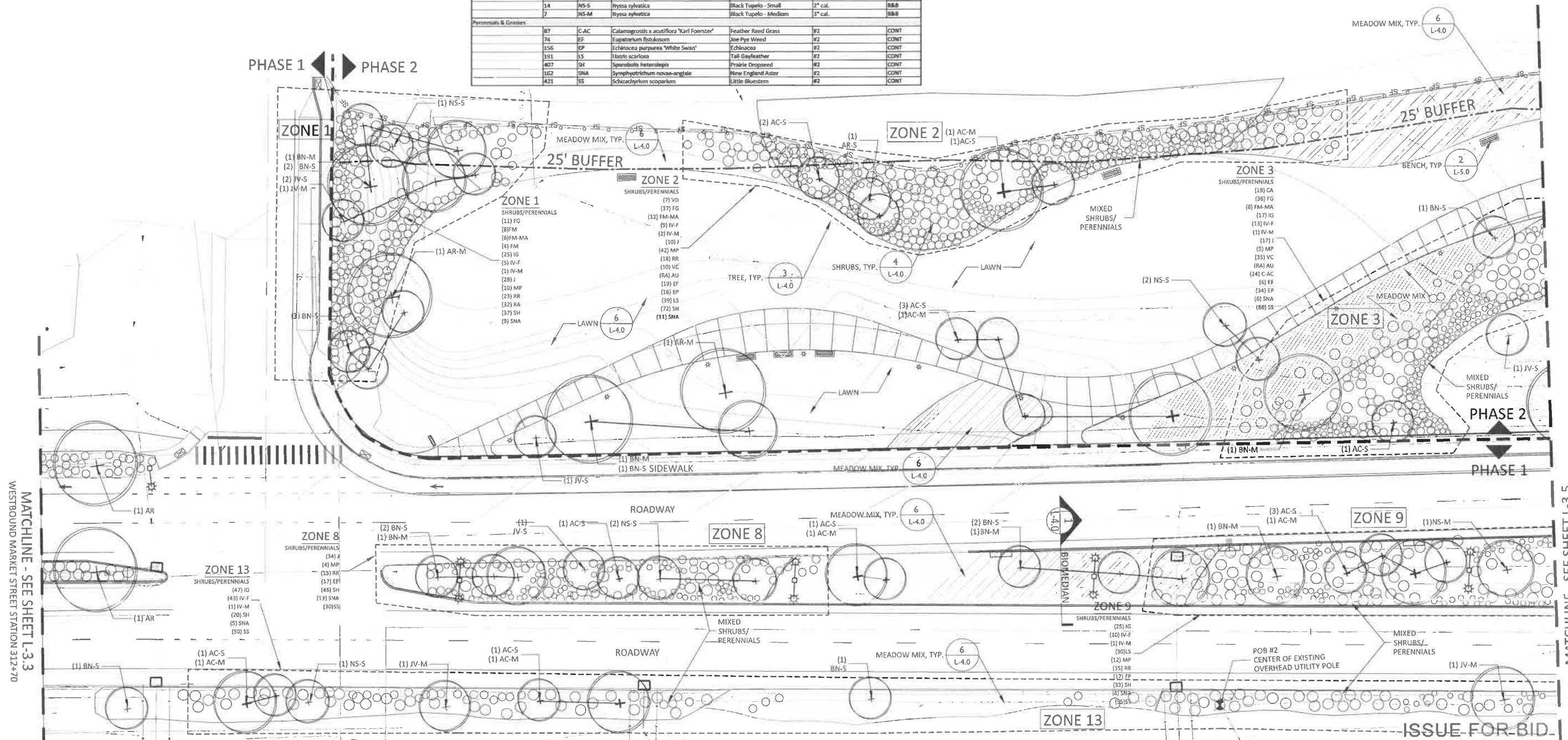
TYPE	QUANTITY	KEY	BOTANICAL NAME	COMMON NAME	SIZE	ROOT
Meadow Mix	50,000 SF		"New England Coastal Salt-Tolerant Grass Mix" by New England Wetland Plants, Inc. (Or approved alternative)			
Groundcover	278	RA	Rhus aromatica 'Grow low'	Grow-low Fragrant Sumac	#3	CONT
Shrubs & Biomedial Shrubs						
	51	AM	Amelanchier canadensis	Black Chokeberry	#3	CONT
	48	CA	Celastrus albifolia	Summersweet	#3	CONT
	113	FG	Fothergilla gardenii	Dwarf Fothergilla	#3	CONT
	35	FM-MA	Fothergilla major 'Mt. Airy'	Mount Airy Fothergilla	#3	CONT
	15	FM	Fothergilla major	Large Fothergilla	#3	CONT
	201	IG	Ilex glabra	Inkberry Holly	#3	CONT
	128	IV-F	Ilex verticillata 'Winter Red'	Winterberry	#3	CONT
	10	IV-M	Ilex verticillata 'In Dandy'	Winterberry	#3	CONT
	256	J	Juniperus virginiana 'Grey Owl'	Juniper	#3	CONT
	276	MP	Myrica pennsylvanica	Bayberry	#5	CONT
	265	RR	Rosa rugosa 'Alba'	Beach Rose	#3	CONT
	91	VC	Vaccinium corymbosum	Highbush Blueberry	#3	CONT
	38	VD	Viburnum dentatum	Arrowwood Viburnum	#5	CONT
Street Tree Underplanting						
	636	IG-C	Ilex glabra 'Compacta'	Inkberry Holly	#3	CONT
	493	J	Juniperus virginiana 'Grey Owl'	Juniper	#3	CONT
	603	RR	Rosa rugosa 'Alba'	Beach Rose	#3	CONT
Trees						
Street Trees						
	14	AM	Acer rubrum 'October Glory'	Red Maple	4" cal.	S&B
	35	QR	Quercus borealis 'Rubra'	Red Oak	4" cal.	S&B
	12	SJ	Sophora japonica 'Regent'	Japanese Pagodatree	4" cal.	S&B
	35	TL	Tilia tomentosa 'Sterling Silver'	Silver Linden	4" cal.	S&B
	13	UP	Ulmus parviflora 'Allee'	Chinese Elm	4" cal.	S&B
Park & Biomedial Trees						
	24	AC-S	Amelanchier canadensis	Shadblow - Small	5-6' clump	S&B
	24	AC-M	Amelanchier canadensis	Shadblow - Medium	8-10' clump	S&B
	3	AM-S	Acer rubrum	Red Maple - Small	2" cal	S&B
	4	AM-M	Acer rubrum	Red Maple - Medium	3" cal	S&B
	30	BN-S	Betula nigra	River Birch - Small	6-8' 50% mix single / clump	S&B
	21	BN-M	Betula nigra	River Birch - Medium	8-10' 50% mix single / clump	S&B
	6	IV-S	Juniperus virginiana	Red Cedar - Small	6-7"	S&B
	12	IV-M	Juniperus virginiana	Red Cedar - Medium	7-8"	S&B
	14	NS-S	Nyssa sylvatica	Black Tupelo - Small	2" cal.	S&B
	7	NS-M	Nyssa sylvatica	Black Tupelo - Medium	3" cal.	S&B
Perennials & Grasses						
	87	C-AC	Calamagrostis x acutiflora 'Carl Foerster'	Feather Reed Grass	#2	CONT
	74	EP	Eupatorium robustum	Joe Pye Weed	#2	CONT
	156	EP	Echinacea purpurea 'White Swain'	Echinacea	#2	CONT
	191	LS	Lythris scariosa	Tall Gayfeather	#2	CONT
	407	SH	Spartanopsis heterolepis	Prairie Dropseed	#2	CONT
	162	SNA	Symphoricarpos novae-angliae	New England Aster	#2	CONT
	421	SS	Schizanthus scoparium	Little Bluestem	#2	CONT



LEGEND



PHASE 1 PHASE 2



MATCHLINE - SEE SHEET L-3.3
WESTBOUND MARKET STREET STATION 312+70

MATCHLINE - SEE SHEET L-3.5
WESTBOUND MARKET STREET STATION 318+40

PROJECT No.	13121
DESIGNED BY:	
CHECKED BY:	
SCALE:	1"=20'

NO.	1
REVISION	
DATE	3/28/15
BY	W/L

RSRG
the science of insight
49 South Main St., Suite 202, Concord, NH 03302
800.774.8883

Richardson & Associates
Landscape Architects

CITY OF PORTSMOUTH, NH
MARKET STREET GATEWAY
PLANTING PLAN

DATE:	11/9/2015
DRAWING No.	L-3.4

ISSUE FOR BID